

Yesterday (Parody)

We would never infringe on anyone's copyright. This lesson was meant to educate and start a political discourse.

INTERACTIVE PDF: Video links are included wherever you see the  icon

RE-WATCH THIS SESSION AND DOWNLOAD THE FILES:

LearnPianoLive.com/blog

AND FIND US ANYWHERE YOU ALREADY GO:

facebook.com/Learnpianolive flickr.com/photos/learnpianolive
instagram.com/learnpianolive soundcloud.com/learnpianolive
twitter.com/learnpianolive patreon.com/user?u=3096340
twitch.tv/learnpiano teacherspayteachers.com/Store/Learn-Piano-Live
pinterest.com/learnpianolive learnpianolive.tumblr.com



KlopAcademy.com



LearnPianoLive.com



YESTERDAY



HOMEWORK / PLAY-ALONG / GOAL / LEAD SHEET / CHORD CHART: ♩ = 105 bpm

INTRO	F						
	F	Esus	A	Dm	Bb	Gm	
VERSE	Yesterday		all my troubles seemed so	far away.		Now it looks as though they're	
	F	Dm	G	Bb	F	: REPEAT	
CHORUS	here to stay.	Oh, I	believe in	yester	day.		
	Asus	A	Dm	Bb	Gm	C	F
CHORUS	Why she had to go, I don't know, she wouldn't say.						
	Asus	A	Dm	Bb	Gm	C	F
VERSE	I said something wrong, now I long for yester day.						
	F	Esus	A	Dm	Bb	Gm	
VERSE	Yesterday		love was such an easy	game to play.		Now I need a place to	
	F	Dm	G	Bb	F		
VERSE	hide away.	Oh, I be	lieve in	yester	day.		





YESTERDAY

CHORDS ILLUSTRATED

F

E

A

Dm

Bb

▶ BUILDING CHORDS FROM SCRATCH:

- ▶ Major: <https://youtu.be/zHoFMbOKKus>
- ▶ Minor:
- ▶ Augmented:
- ▶ Diminished: https://youtu.be/6_ohhaC3oDc
- ▶ Sus 4: <https://youtu.be/pL2pClADIQQ>

- ▶ Dominant: <https://youtu.be/DbRLVmxSoGE>
- ▶ Inversions: <https://youtu.be/qzFcNdUdPdQ>
- ▶ 7th Chords: https://youtu.be/9GQidMZLf_w





YESTERDAY

CHORDS ILLUSTRATED

Gm

G

▶ BUILDING CHORDS FROM SCRATCH:

- ▶ **Major:** <https://youtu.be/zHoFMbOKKus>
- ▶ **Minor:**
- ▶ **Augmented:**
- ▶ **Diminished:** https://youtu.be/6_ohhaC3oDc
- ▶ **Sus 4:** <https://youtu.be/pL2pClADIQQ>

- ▶ **Dominant:** <https://youtu.be/DbRLVmxSoGE>
- ▶ **Inversions:** <https://youtu.be/qzFcNdUdPdQ>
- ▶ **7th Chords:** https://youtu.be/9GQidMZLf_w



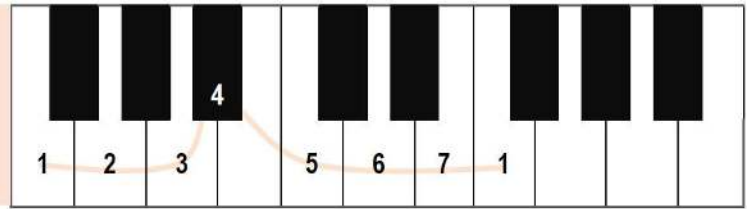


YESTERDAY

KEY ILLUSTRATED:

F major:

Use this picture to find the notes for this key:



▶ Building keys/scales/tonalities from scratch

MELODY IN NUMBERS

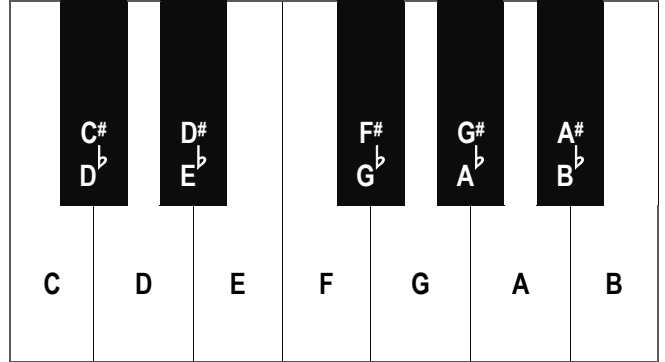
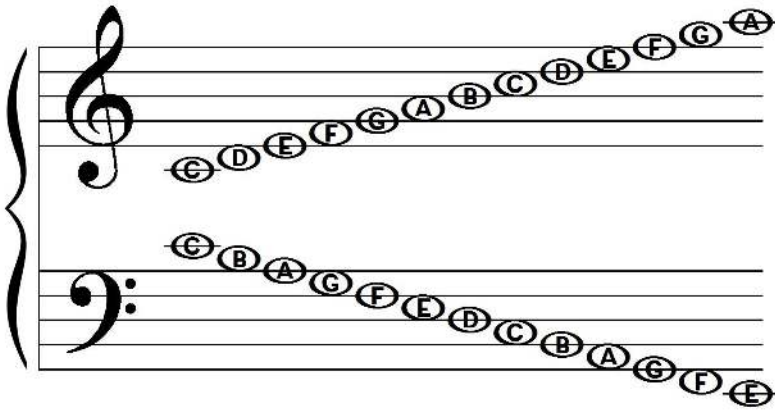
2 1 1	3	#4	#5 6	7	1	7	6 6		
Yesterday	all	my	troubles	seemed	so	far	away.		
6	6	5	4	3	2	4	3	3	
Now	it	looks	as	though	they're	here	to	stay.	
2	1	3 2	6	1 3 3					
Oh,	I	believe	in	yesterday.					
2 1 1	3	#4	#5	6	7	1	7	6	6
Suddenly	I'm	not	half	the	man	I	used	to	be.
6	6	5 4	3 2	4 3	3				
There's	a	shadow	hanging	over	me.				
2	1 3 2	6	1 3 3						
Oh,	yesterday	came	suddenly.						
3	3	6	7	1	7	6	7	6	5 6 3
Why	she	had	to	go,	I	don't	know,	she	wouldn't say.
3	3	6 7	1	7	6	7	6	5 7 1 543	
I	said	something	wrong,	now	I	long	for	yesterday.	
2 1 1	3	#4	#5	6	7 1	7	6	6	
Yesterday	love	was	such	an	easy	game	to	play.	
6	6	5	4	3	2	4	3 3		
Now	I	need	a	place	to	hide	away.		
2	1	3 2	6	1 3 3					
Oh,	I	believe	in	yesterday.					





YESTERDAY

SHEET MUSIC CHEAT KEYS



SHEET MUSIC

[▶ More notation skills in Klop Academy](#)

Sheet music for the song "Yesterday" in F major, 4/4 time. The music is presented in three systems, each with a vocal line and a piano accompaniment line. Chord symbols are placed above the notes.

System 1: Chords: F, Esus, A, Dm. Lyrics: "Yes - ter - day / Sudd - en - ly / all my troub - les seemed so / I'm not half the man I / far a - way / used to be"

System 2: Chords: Bb, Gm, F, Dm, G, Bb, F. Lyrics: "Now I need a place to / there's a shad - ow hang - ing / hide a - way / o - ver me / Oh / I be - lieve in / yes - ter day / yes - ter - day / came / sudd - en - ly"

System 3: Chords: Asus, A, Dm, Bb, Gm, C, F. Lyrics: "Why / I / she / said / had / to / go / I don't know / she would - n't / say / some - thing / wrong / now / I"





YESTERDAY

....SHEET MUSIC CONTINUED

Gm2. C F

long for yes - ter - da - y

F Esus A Dm Bb Gm

Yes - ter-day love was such an ea-sy game to play Now I need a place to

F Dm G Bb F

hide a - way Oh I be - lieve in yes - ter day



YESTERDAY

THEORY OVERVIEW

KEY AND TIME SIGNATURE

2/4 4/4 3/4 6/8 5/8 7/8 9/8 12/8

COMPARE SETS OF 4

Notice: Shortened phrases

CHORD NUMBERS

1, 2, 4, 5, 6 **Notice:** M3, M2

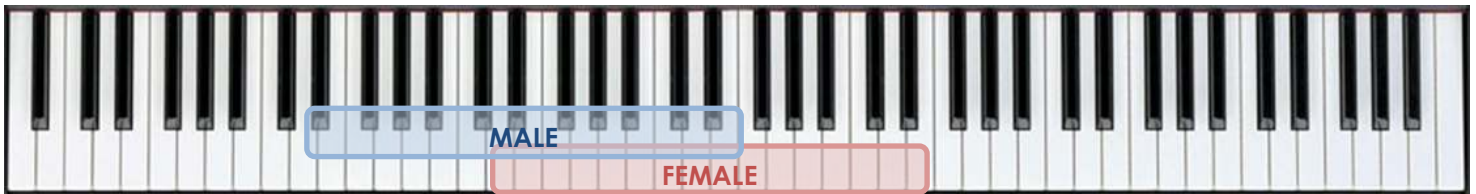
FORM AND V/C/B SEPARATION

AABA ABA Blues ABC IVPCBNE Binary

MELODIC PATTERNS AND SHAPES

Notice: Stepwise, despite funky chords; melodic suspensions

VOCAL RANGE



ARRANGEMENTS / BREAKDOWNS / INSTRUMENTATION

Notice: (1) & 2 &



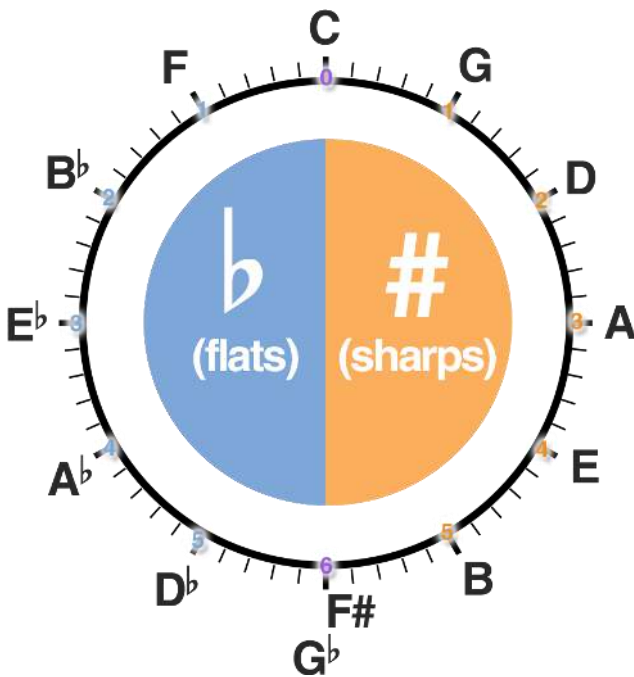


YESTERDAY

SUBSTITUTION AND INTERPOSITION TOOLS

- Exchange relative minors / majors
- Ssus4 / sharp 4 on longer chords
- Augment (+) dominant chords
- Walk-ups and downs
- Reharm on melody: M, m and sus
- Pedal tones in bass
- Slash chords and inversions
- Connect bass movements
- Add 2-5 or 6-2-5 or 3-6-2-5 before a chord
- Change chord quality where melody not on 3
- Add 13 (6)
- On long min chords, substitute the 5 every couple beats
- Back door dominant (minor 4 over flat 7)
- Add passing diminished chords
- Modal borrowing
- Tritone sub dominant chords
- 2-5 tritone substitutions
- Dominant polychords built on 2, b3, b5, b6, or 6
- Altered dominant when pointing to diatonic minor

CIRCLE OF 5THS: MUSIC'S MULTI-TOOL



CHORD NUMBERS BY KEY

In the key of C...

In the key of D^b...

In the key of D...

In the key of E^b...

In the key of E...

In the key of F...

In the key of G^b...

In the key of G...

In the key of A^b...

In the key of A...

In the key of B^b...

In the key of B...

...the 1 chord is:

...the 2 chord is:

...the 3 chord is:

...the 4 chord is:

...the 5 chord is:

...the 6 chord is:

...the 7 chord is:

C	D-	E-	F	G	A-	B ^o
D ^b	E ⁻	F-	G ^b	A ^b	B ⁻	C ^o
D	E-	F#-	G	A	B-	C# ^o
E ^b	F-	G-	A ^b	B ^b	C-	D ^o
E	F#-	G#-	A	B	C#-	D# ^o
F	G-	A-	B ^b	C	D-	E ^o
G ^b	A ⁻	B ⁻	C ^b	D ^b	E ⁻	F ^o
G	A-	B-	C	D	E-	F# ^o
A ^b	B ⁻	C-	D ^b	E ^b	F-	G ^o
A	B-	C#-	D	E	F#-	G# ^o
B ^b	C-	D-	E ^b	F	G-	A ^o
B	C#-	D#-	E	F#	G#-	A# ^o

SUBSTITUTION BY NUMBER

COMMON

1	6	4	3
2	4		
3	1	5	1/3
4	2	6	
5	3		
6	4	1	2

SPECIAL

1	5m	1m
2	2M	4m
3	3M	
4	2M	4m
5	5m	
6	6M	2M





YESTERDAY



HOMEWORK / PLAY-ALONG / GOAL / LEAD SHEET / CHORD CHART: ♩ = 105 bpm

INTRO	F						
	F	Esus	A	Dm	Bb	Gm	
VERSE	Yesterday		all my troubles seemed so	far away.		Now it looks as though they're	
	F	Dm	G	Bb	F	: REPEAT	
CHORUS	here to stay.	Oh, I	believe in	yester	day.		
	Asus	A	Dm	Bb	Gm	C	F
CHORUS	Why she had to go, I don't know, she wouldn't say.						
	Asus	A	Dm	Bb	Gm	C	F
VERSE	I said something wrong, now I long for yester day.						
	F	Esus	A	Dm	Bb	Gm	
VERSE	Yesterday		love was such an easy	game to play.		Now I need a place to	
	F	Dm	G	Bb	F		
VERSE	hide away.	Oh, I be	lieve in	yester	day.		

